



PSO News

Mary Woodward Elementary



Next Scrip Order Date: Monday, September 22

NEW for 2014: Target, Taco Bell and Cabelas

Chinook Book and App Available through December - Mary Woodward Receives 50% of cost!

Order forms can be found on the PSO website, www.marywoodwardpso.com, under Events & Fundraisers. For check orders, please leave the order form and payment in the Scrip box in the office by 2:30 pm. To pay by credit card via PayPal, place your order online at www.marywoodwardpso.com.

Orders will be available for pick up on the morning of Monday, September 29. You can also choose to have your order mailed to you.

Enrichment Classes Update

You may have noticed that the Enrichment Classes are not starting on September 22nd as printed on the PSO calendar. The classroom classes will start the week of **October 13th** and the gym classes will start the week of **November 10th**.

Schedules and specific class information will go out by next Thursday, September 25th.

Student Directory Update

The Mary Woodward PSO will not be publishing a Student Directory for the 2014-2015 school year.

If you were contemplating submitting an advertisement, we appreciate the consideration. Please think about being an auction sponsor in February!

Burgerville Fundraiser Night

It's Burgerville Night!!

Come and support Mary Woodward by having dinner at the HWY 99 Burgerville on **Thursday September 25th** from 4-8PM. 10% of the profit made that night will go directly back to our school. This includes drive thru orders! It's going to be a fun night— you won't want to miss it!



September 19, 2014

In This Issue:

- *Next Scrip Order Date: Monday, September 22*
- *Enrichment Classes Update*
- *Student Directory Update*
- *Burgerville Fundraiser Night*
- *Fall Family Matinee Program*
- *Jog-A-Thon 2014*
- *ORBIDA - 2nd Annual Parent Workshop*
- *Fundraising Tip of the Month*
- *Box Tops are Like Dimes in Disguise...*
- *Art Lit is It!*

Fall Family Matinee Program

Looking for something fun to do this Fall?

The Valley Cinema in Beaverton is offering their annual Fall Family Matinee Program. Matinee Season Tickets admitting children to all 10 movies are now available for purchase in the school office for only \$10. That's just \$1 per movie. And to add to this great deal, parents accompanied with children holding season tickets are admitted FREE! Children 3 and over must have tickets to be admitted.

Check out the attached flyer to see what movies they will be showing this year. The first movie, Muppets Most Wanted, starts the week of October 11-14th. So don't delay, stop by the school office and purchase your tickets today!

Jog-A-Thon 2014

Pledge envelopes were sent home last Friday! If you haven't already done so, please assist and encourage your child to secure pledges to raise money for our school. Envelopes are due back by **Monday, Sept 29th** with pledges written on the outside (no money please). Once your child has completed the Jog-a-Thon on Friday, October 3rd, the envelope will be returned with your child so that pledges can be collected.

Running times and class shirt colors are as follows:

Run Time	Grade	Class Shirt Color			
		Blue	Red	Green	Yellow
9:00-9:20	Kinder-gartners	Orchard (AM)	Rice		
9:30-10:00	3 rd grad-ers	Otto	Krebs	Zell	
10:10-10:40	5 th graders	Sheffels	Miller	Barendse	
10:50-11:20	4 th graders	Smith	Waufle	Graffius	
12:10-12:40	1 st graders	Brown	Langelie rs	McCom bs	Orchard (PM)
12:50-1:20	2 nd grad-ers	Bell	Petter-son	White	

It's not too late to volunteer! If you didn't get a chance to sign up on Back to School night, please contact committee chairs Alisa and Jessica at mwjogathon@gmail.com

ORBIDA - 2nd Annual Parent Workshop

Attached is a flyer from the Oregon Branch of the International Dyslexia Association (ORBIDA) about a workshop the group is conducting tomorrow.

The PSO is sharing this flyer for informational purposes only. The PSO does not endorse the organization or the workshop in any way.

Upcoming Events

September

22: Box Tops Contest #1 starts
22: [Scrip Orders Due](#)
23: Picture Day
25: Burgerville Fundraiser (4-8 PM)
30: Science Fair Assembly

October

1: Vision Screenings
3: Jog-a-Thon
13: PSO Meeting (8:30 am)
13: [Scrip Orders Due](#)
13: Fall Enrichment Classes start
20-24: Book Fair
27: [Scrip Orders Due](#)
28: Picture Retakes
31: Halloween Parties

Making Our School Better, Together.

The Mary Woodward Parent Support Organization (PSO) was established to promote quality education, communication and understanding among the students, parents, faculty and the community of Mary Woodward Elementary School. The PSO sponsors various academic and social programs, coordinates volunteer activity and conducts fundraisers, all in the spirit of providing enrichment for our students and assistance for the work in the classroom. All parents and legal guardians of enrolled Mary Woodward students are invited to participate in the PSO. There is no cost for membership. Meetings are usually held the second Monday of each month.

For more PSO news online, visit www.marywoodwardpsd.com.

Fall 2014 Family Matinee Program

VALLEY CINEMA • 9360 SW BEAVERTON-HILLSDALE HWY • BEAVERTON, OR • 503-296-6843

The Valley Cinema is proud to present the annual **Fall Family Matinee Program**. Matinee Season Tickets admitting children to all 10 movies are now available through selected school PTA's or the theater box office for only \$10.00 per child age 3 and older. Individual tickets may be purchased for \$4.00 each. No passes, discounts or \$1.00 Monday tickets. PARENTS accompanied with children holding season tickets are admitted **FREE!** Adults without children will not be admitted to the matinees in this program. Children 3 and over must have tickets to be admitted.

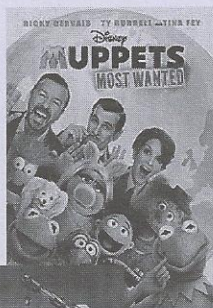
NO OUTSIDE FOOD OR BEVERAGES WILL BE ALLOWED IN THE THEATER.

Matinees will be shown each Saturday at 12:00 noon and 2:30pm; Sundays at 9:30am, 12:00 noon, 2:30pm and 5:30pm. Showings Monday and Tuesday at 5:30pm. Box office opens at 11:30am Saturday; Sunday at 9:00am. Monday and Tuesday at 5:00pm. Please arrive early for best seating. Movie titles are subject to change based on availability.

Week 1 Oct 11 - 14

Muppets Most Wanted

PG 110 minutes



Week 2 Oct 18 - 21

The Lego Movie

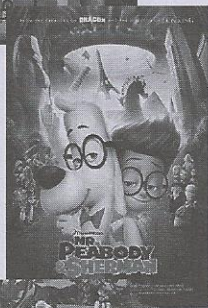
PG 100 minutes



Week 3 Oct 25 - 28

Mr. Peabody & Sherman

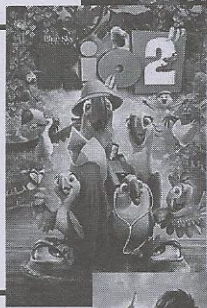
PG 90 minutes



Week 4 Nov 1 - 4

Rio 2

G 100 minutes



Week 5 Nov 8 - 11

How to Train Your Dragon 2

PG 105 minutes



Week 6 Nov 15 - 18

Disney's Planes: Fire & Rescue

PG 85 minutes



Week 7 Nov 22-25

Earth to Echo

PG 90 minutes



Week 8 Nov 29 - Dec 2

Maleficent

PG 100 minutes



Week 9 Dec 6 - 9

Disneynature Bears

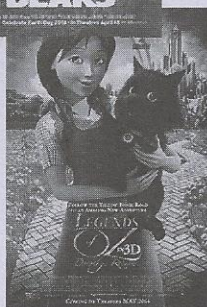
G 80 minutes



Week 9 Dec 13 - 16

Legends of OZ: Dorothy's Return

PG 90 minutes



***** DRAWING FOR TWO \$50.00 GIFT CERTIFICATES *****

Please deposit your registration card by December 9th at the theater for the drawing.

Fundraising Tip of the Month

Haggen



www.haggen.com

Haggen stores recently started a School Bucks program where funds based on your participating item purchases are sent to the Mary Woodward PSO!

Sign-up is simple! Just link your Haggen CARD to the PSO each year!

You can link your Haggen CARD to the Mary Woodward PSO in stores or by going to this website:
<http://guest.haggen.com/account/logon?promotion=schoolbucks>

From there, you will enter your information and select the PSO from a drop down menu of options and click "Submit." It's that simple! Then the PSO is linked to

your Haggen CARD until May 15 each year.

Box Tops are Like Dimes in Disguise...

The first collection contest of the year officially begins on **September 22** and goes through December 5. The top three classes will earn a party! Each teacher has a collection envelope in their classroom so please send in your Labels and Box Tops that you've been collecting.



Did you know that you can register your grocery cards to automatically earn Box Tops and Label points for the PSO account at checkout? Register your grocery cards by following the websites below:

- GrowingLocalLearning.com for electronic Box Tops from your Albertsons card
- 2ways2earn.com for electronic Box Tops from your Safeway card
- Rewardyourschool.com for electronic Box Tops from your Fred Meyer and QFC cards
- elabelsforeducation.com for electronic Labels for Education from your Albertsons, Fred Meyer, Safeway and QFC cards

Please continue to clip your Box Tops and Labels and return them to your child's classroom as this allows us to "double up" our points and contributes to the classroom collection contest!

Attached to the newsletter is the current Participating Product list for the Box Tops for Education program. To view a list of the Participating Products for the Labels for Education program, please visit www.labelsforeducation.com/Earn-Points/Participating-Products.

Questions? Contact Jessica Brown at jlbrown003@hotmail.com

2014-2015 MW PSO Executive Committee & Board Support

President

Karen Emerson

karenemerson@frontier.com

President Elect

OPEN

Secretary

OPEN

Treasurer

Cheryl Payne

bryan.n.cheryl@gmail.com

Assistant Treasurer

OPEN

Volunteer Coordinator

Carlene Turpen

carlene@turpen.org

Webmaster &

Newsletter

Coordinator

Kayleen Mendenhall

kayleen@booyahcreative.com



CLIPPING IS EASY! FIND BOX TOPS ON OVER 250 PRODUCTS YOU KNOW AND LOVE!

RECORTA BOX TOPS ¡Y RECAUDA DINERO PARA TU ESCUELA!

It's easy to find Box Tops. In fact, you may have some in your home right now. Clip Box Tops from your favorite products and turn them into your school today! Each Box Top is worth 10¢ and they add up fast!

Encontrar Box Tops es fácil. De hecho, tal vez tengas algunos en tu casa en este momento. Recorta Box Tops de cientos de tus productos favoritos. Cada cupón de Box Tops tiene un valor de 10¢ para tu escuela ¡y esas cantidades se suman rápido!

APPAREL ROPA



- Hanes® boys'/girls' underwear
- Hanes® boys'/girls' socks
- Hanes® printed shirts/sweatshirts
- Hanes® specially marked Men's and Women's underwear and socks bonus packs

BAKING & BAKEWARE HORNEADO Y PRODUCTOS PARA HORNEAR



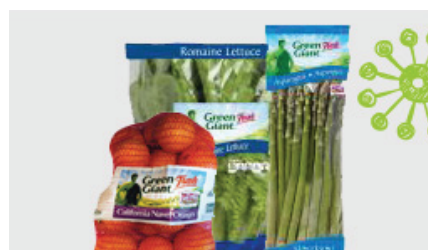
- Betty Crocker™ Baking & Cake Mixes
- Betty Crocker™ Brownies & Dessert Mixes
- Betty Crocker™ Complete Pancake
- Betty Crocker™ Create 'n' Bake Cookies
- Betty Crocker™ Frosting
- Betty Crocker™ FUN da-Middles
- Betty Crocker™ Gluten Free Mixes
- Betty Crocker™ Muffin & Cookie Mixes
- Betty Crocker™ Pizza Crust Mix
- Bisquick™
- Fiber One™ Mixes
- Gold Medal™ Flour
- Reynolds® Genuine Parchment Paper
- Reynolds® Non-Stick Baking Pans
- Reynolds® Staybright Baking Cups

CEREAL CEREALES



- Basic 4™
- Cascadian Farm™
- Cascadian Farm™ Protein Granola
- Cheerios™
- Chex™
- Cinnamon Toast Crunch™
- Cocoa Puffs™
- Cookie Crisp™
- Fiber One™
- Gluten Free Chex™ Oatmeal
- Golden Grahams™
- Honey Nut Clusters™
- Kix™
- Lucky Charms™
- Nature Valley™ Protein Crunchy Granola
- Oatmeal Crisp™
- Raisin Nut Bran
- Reese's Puffs®
- Total™
- Trix™
- Wheaties™

PRODUCE FRUTAS Y VERDURAS



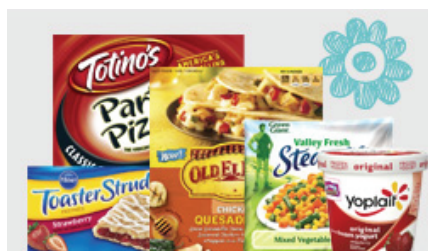
- Green Giant™ Fresh Vegetables
- Green Giant™ Fresh Fruit
- Green Giant™ Fresh Herbs

FOOD STORAGE CONTENEDORES PARA ALIMENTOS



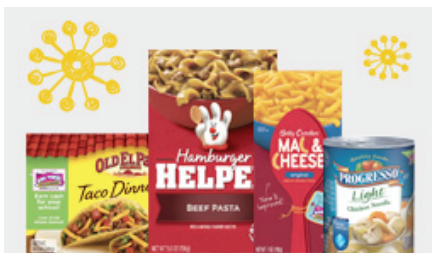
- Ziploc® brand Big Bags XL (4 ct.)
- Ziploc® brand Freezer Bags
- Ziploc® brand Smart Snap Containers
- Ziploc® brand Storage Bags
- Ziploc® brand Twist 'n Loc® Containers
- Ziploc® brand VersaGlass® Containers
- Ziploc® brand Vacuum Freezer System
- Ziploc® brand Zip 'n Steam™ Bags

FROZEN CONGELADOS



- Green Giant™ Vegetables
 - Green Giant™ Seasoned Steamers™
 - Green Giant™ Just for One™
 - Green Giant™ Family Size Frozen Vegetables
 - Green Giant™ Valley Fresh Steamers
- Pillsbury™ Breakfast
 - Pillsbury™ Grands! Biscuit Sandwiches
 - Pillsbury™ Pancakes
 - Pillsbury™ Toaster Scrambles™
 - Pillsbury™ Toaster Strudel™
- Old El Paso™ Frozen Entrees
- Totino's™ Party Pizza® & Pizza Rolls® Snacks
- Yoplait Frozen Yogurt Bars
- Yoplait Frozen Yogurt Original and Greek Pints
- Yoplait Smoothies and Greek Smoothies

MEALS & SIDES COMIDAS Y GUARNICIONES



- Betty Crocker™ Bowl Appetit
- Betty Crocker™ Hamburger, Chicken & Tuna Helpers
- Betty Crocker™ Helper Complete Meals
- Betty Crocker™ Mac & Cheese
- Betty Crocker™ Specialty Potatoes & Potato Buds
- Betty Crocker™ Suddenly Salad
- Green Giant™ Canned Vegetables
- Green Giant™ Veggie Blend-Ins
- Old El Paso™ Dinner Kits
- Old El Paso™ Bowls
- Old El Paso™ Rice & Beans
- Old El Paso™ Shells & Seasonings
- Progresso™ Panko
- Progresso™ Bread Crumb Mixers™
- Progresso™ Recipe Starters™
- Progresso™ Soup
- Progresso™ Broth

PAPER PRODUCTS PRODUCTOS DE PAPEL



- Kleenex® Facial Tissues
 - Kleenex® Mainline flats (160 ct., 195 ct., 230 ct. and multipacks)
 - Kleenex® Ultra Multipacks
 - Kleenex® Anti-Viral
- Scott® Bath Tissue
- Scott® Paper Towels
- Scott Naturals™ Flushable Cleansing Cloths

SCHOOL & OFFICE SUPPLIES ARTÍCULOS PARA ESCUELA Y OFICINA



- Boise Polaris® Paper

All Boise trademarks are owned by Boise Paper Holdings, L.L.C., or its affiliates. The trademark BOISE is owned by Boise Cascade, L.L.C., or its affiliates. Ziploc® is a registered trademark of S.C. Johnson and Son, Inc. All rights reserved. Kleenex®, Scott®, and Cottonelle® are the registered trademarks of Kimberly-Clark Worldwide, Inc. Hefty®, Easy Grip®, Elegantware®, ZooPals®, The Gripper®, Cinch Sak®, Renew®, OdorBlock®, Ultra Flex®, EasyFlaps®, BlackOut®, Kitchen Fresh® Basics®, Elegantware®, EZ Foil®, Supreme™, Superweight™, and Hearty Meals™ are registered trademarks of Reynolds Consumer Products Inc. Avery®, Hi-Liter® and Marks-A-Lot® are registered trademarks of Avery Dennison Corporation. LAND O' LAKES, ALPINE LACE, FRESH BUTTERY TASTE, and SNACK'N CHEESE TO-GO! are registered trademarks of Land O'Lakes, Inc. Yoplait® and Marks-A-Lot® are registered trademarks of YOPLAIT MARQUES (France) used under license. MOTT'S and MOTT'S HEALTHY HARVEST are registered trademarks of Mott's LLP. The HERSHEY'S® trademark and trade dress are used under license.

REFRIGERATED & DAIRY REFRIGERADOS Y LÁCTEOS



- Alpine Lace® Pre-Sliced Deli Cheese
- Horizon Organic Milk:
 - Milk Plus DHA Omega-3 (18/8 oz)
 - Reduced Fat Milk with DHA Omega-e (3/6 4 oz)
- Kozy Shack® Pudding
- Land O'Lakes® Cheese Products
 - Chunk Cheese varieties
 - Pre-Sliced Deli Cheese
- Land O'Lakes® Fresh Buttery Taste® Spread (Sticks and tubs)
- Land O'Lakes® Margarine (Sticks and Tubs)
- Land O'Lakes® Sauté Express® Sauté Starter
- Land O'Lakes® Stick Butter or Spreadable Butter Products
- Pillsbury™ Crescents
- Pillsbury™ Grands! Biscuits
- Pillsbury™ Pizza Crust
- Pillsbury™ Melts
- Pillsbury™ Cookies
 - Ready to Bake™
 - Refrigerated
- Pillsbury™ Cinnamon Rolls
- Pillsbury™ Pancake Batter
- Yoplait®
 - Yoplait® Go-GURT® and Simply... Go-GURT®
 - Yoplait® Light & Original Fridge Packs (8 ct.)
 - Yoplait® Kids Multipack
 - Yoplait® Trix Multipack

TABLEWARE MANTELERÍA



- Hefty® Deluxe™ Plates and Platters
- Hefty® Easy Grip® Cups
- Hefty® Everyday™ Cups
- Hefty® Everyday™ Soak Proof Plates and Bowls
- Hefty® Printed Cups
- Hefty® Style Plates
- Kleenex® Dinner Napkins (50 ct.)

SNACKS & JUICES BOCADILLOS



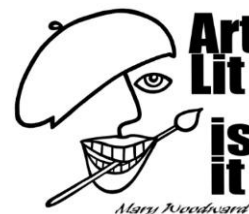
- Betty Crocker™ Fruit Flavored Snacks
- Bugles™
- Cascadian Farm™ Granola Bars
- Cereal Treat Bars
- Cheerios™ Snack Mix
- Chex Mix™
- Fiber One™
 - Bars
 - Brownies
 - Cookies
 - Streusel
- Food Should Taste Good™
 - Food Should Taste Good™ Tortilla & Kettle Cooked Chips
 - Food Should Taste Good™ Pita Puffs
- Gardetto's™ Snacks
- Green Giant™ Veggie Snack Chips
- LARABAR™ (multipacks)
 - ALT™
 - über™
 - LARABAR™
- Larabar™ RENOLA Grain Free Granola
- Mott's® Applesauce products
- Mott's® Juice
- Mott's® Medleys Fruit Flavored Snacks
- Nature Valley™ Bars
- Pillsbury™ Baguette Chips
- Ocean Spray® Fruit Flavored Snacks

WASTE BAGS BOLSAS DE BASURA



- Hefty® Blackout Tall Kitchen Drawstring Bags
- Hefty® Cinch Sak Large Trash Bags and Lawn & Leaf Bags
- Hefty® Easy Flaps® Tall Kitchen Bags and Large Trash Bags
- Hefty® OdorBlock® Tall Kitchen Drawstring Bags
- Hefty® Renew® Tall Kitchen Bags and Trash Bags
- Hefty® SteelSak® Trash Bags
- Hefty® Twist Tie Tall Kitchen Bags and Trash and Lawn & Leaf Bags
- Hefty® Ultimate
- Hefty® Ultra Flex® Trash Bags

Did you miss us at Back-to-School Night?



It's not too late to volunteer for Mary Woodward's Art Literacy program! Parent volunteers (just like you!) work within a team to share 6 prepared lessons and art projects with your child's class. No art or teaching experience is necessary!



Students working on art inspired by Ansel Adams

We have many different types of volunteer opportunities, ranging from hanging the art, to talking with the kids about the featured artist, to helping in the classroom. We provide everything you need including scripts and detailed project instructions!

Want more information?

Our first volunteer session will be held **Wednesday, October 1st**.

Come see what this program is all about! Beverages and treats will be provided.

- 6:15-7pm New Volunteer Orientation (Veteran Volunteers are Welcome!)
- 7-7:30pm Review Classroom Session Dates/Times, Team Assignments
- 7:30-8:30pm October Artist/Project Training

Questions? Contact the Art Lit Team at artlitchairs@gmail.com
Laura Wieking, Kari Vandergriff & Trissa Davis



“Dyslexia: A Fresh Start for the Fall”

Dyslexia Training Institute

Dr. Kelli Sandman-Hurley & Tracy Block-Zaretsky

Saturday, September 20, 2014

Community of ChristChurch

5170 NW Five Oaks Drive, Hillsboro, OR 97124

Part I: “Introduction to Dyslexia” – Dyslexia Training Institute

In this 2-hour session you will be introduced to the signs and symptoms of dyslexia and learn about many popular myths. We will cover the scientific research and discuss the remediations supported by research. We will also discuss current accommodations available to children and adults with dyslexia.

Part II: “Advocacy – Know Your Rights” – Dyslexia Training Institute

This 90 minute session will help you learn the basics of Special Ed Law as it relates to dyslexia. We will give you an overview of: Individuals with Disabilities and Education Act (IDEA), IEPs, 504's, appropriate accommodations, letter writing, receiving appropriate services and interventions, dispute process and resolution — as they all relate to a student with dyslexia.

Part III: “Learn from Experience – the ORBIDA Student Panel”

Hear first-hand about the real-life experiences, challenges and successes of students who are dealing with dyslexia every day. Learn what works (it's different for each individual), and what does not work both at home and in the classroom.

Part IV: “Person-Centered Plans” – FACT-Oregon

You will leave with all the information that you need to:

- Create your child's one-page profile
- Articulate your vision for the future
- Identify your child's strengths, gifts, capacities
- Target what works and what doesn't

For additional details and to register, please visit our event webpage at:

<http://tinyurl.com/ORBIDA-Parents>

The Oregon Branch of the International Dyslexia Association (IDA) is pleased to present a forum for information to benefit its constituents. It is IDA's policy to not recommend or endorse any specific program, product, institution, company, or instructional material, noting that there are a number of such that present the critical components of instruction as defined by **IDA's Knowledge and Practice Standards for Teachers of Reading**. Any program, product, institution, company, or instructional material carrying the IDA Accredited seal meets the IDA Standards. Advertisements or products in this, or any other conference-related material, do not necessarily reflect the views of IDA or its branches.

The International Dyslexia Association - Oregon Branch

P. O. Box 2609, Portland, OR 97208-2609

Tel: 503-228-4455 – E-mail: info@orbida.org – Web: www.orbida.org

Founded in memory of Samuel T. Orton

Serving Oregon and the southwest Washington counties of Pacific, Wahkiakum, Cowlitz, Clark, Skamania and Klickitat